

INSIGHT – Student User Guide

Students can log in to INSIGHT with the same username and password they use to log in to the computers in school.

For example: Student Joe Smith

Username: Joe-Smith

Password: kings11



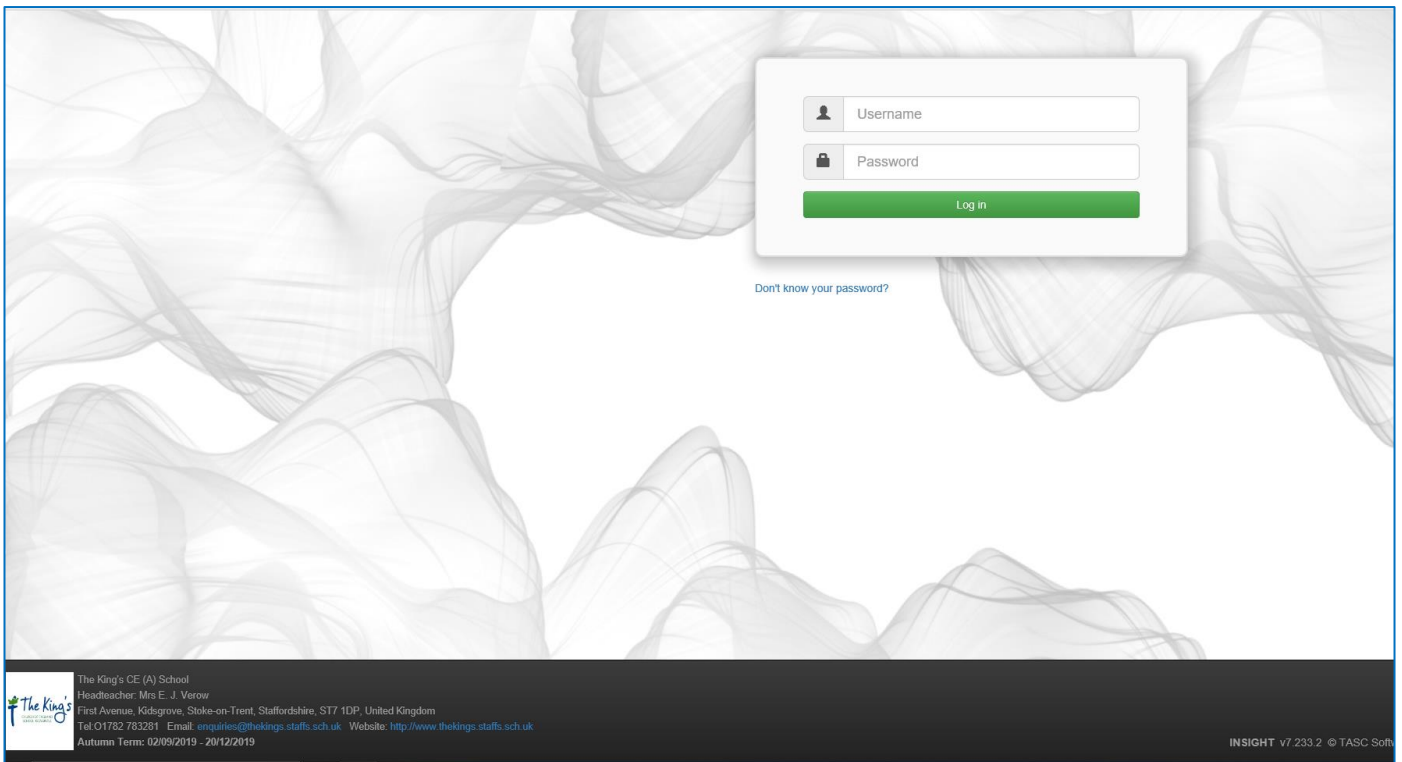
Access through the School Website

www.thekings.staffs.sch.uk

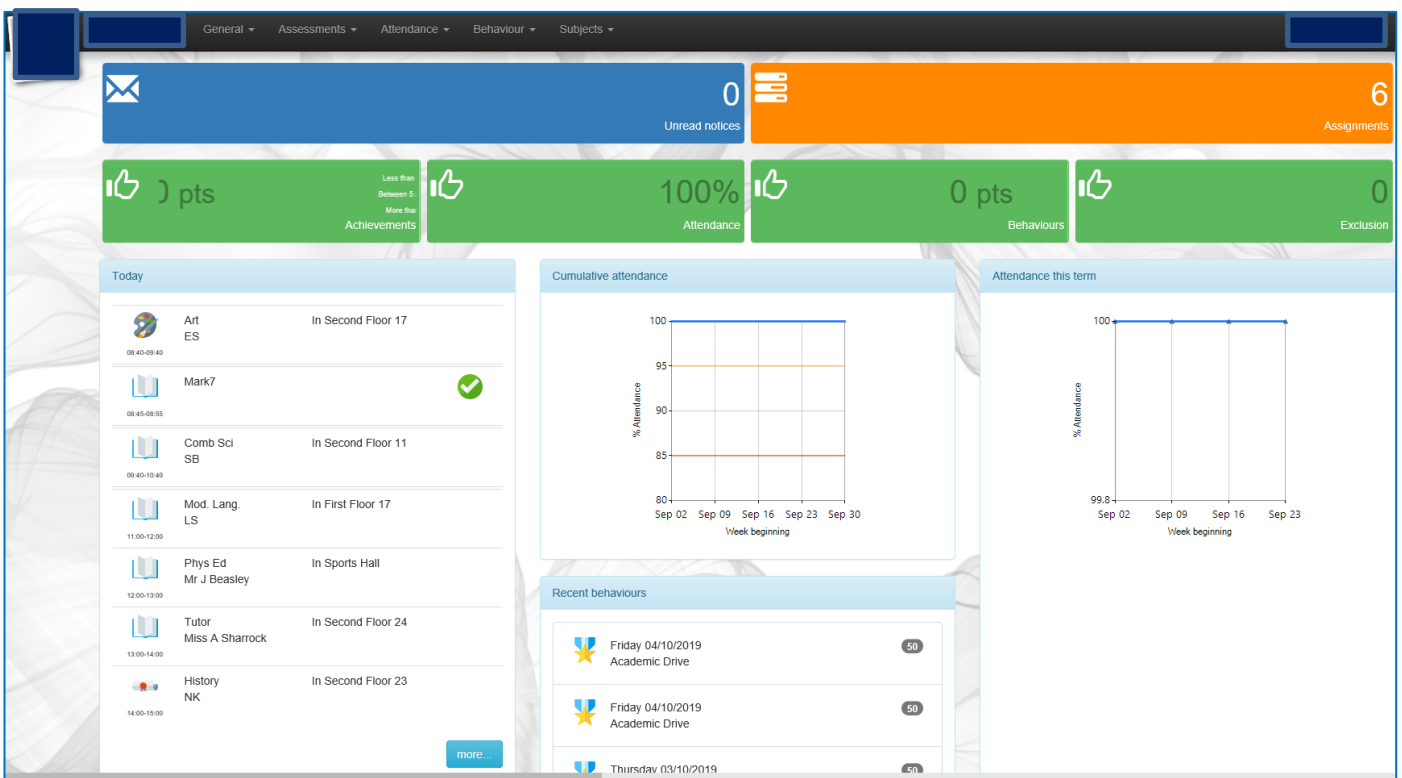
On our website there is an '**Online Learning**' page under the '**Students**' tab. Click on the INSIGHT button to go to our INSIGHT page.

A screenshot of the school's website. The header features the school's logo and name, 'The King's Church of England School Kidsgrove', along with social media icons and a search bar. A navigation menu includes 'Home', 'About Us', 'News', 'Curriculum', 'Sixth Form', 'Extra Curricular', 'Governors', 'Fifth on Fourth', 'Students', 'Parents', and 'Contact Us'. The 'Students' tab is selected. Below the navigation, a sidebar lists various school-related topics, with 'Online Learning' highlighted. The main content area is titled 'Online Learning' and contains several logos for educational resources: 'INSIGHT Parent and Pupil Learning Gateway' (highlighted with a red box), 'SAM Learning', 'MathsWatch', 'gsepod Education on Demand', and 'musicfirst'.

This is where you need to enter your school username and password to log in.



This is the opening page you will see when you first log in. Use the menu at the top to navigate around the site.



Your timetable

To view your timetable click on 'General' and then 'Timetable'.

Monday 30/09/2019						
08:40 Mon1:1 En 7-2/En First Floor 16 Mrs S Hammond	08:45 AM Mark7	08:55 Mon1:2 Drama 7-Gold/Dm F25 Dance Studio Miss E A Carr	10:40 Mon1:3 Art 7-Prpl/Ar Second Floor 17 Miss E A Stevens	12:00 Mon1:4 Maths 7-1/Ma First Floor 04 Mr A Seymour-Hollis	13:00 Mon1:CHP Tutor Mark7 Second Floor 24 Mrs J O'Hara Douglas	14:00 Mon1:5 Rel Ed 7-2/Re First Floor 22 Mrs K L Berrisford
Tuesday 01/10/2019						
08:40 Tue1:1 Geography 7-2/Gg Second Floor 24 Miss A Sharrock	08:45 AM Mark7	08:55 Tue1:2 Rel Ed 7-2/Re First Floor 22 Mrs K L Berrisford	10:40 Tue1:3 Computer Science 7-Prpl/Cp Second Floor 36 Mr Z Aslam	12:00 Tue1:4 En 7-2/En First Floor 16 Mrs S Hammond	13:00 Tue1:CHP Tutor Mark7 Second Floor 24 Miss A Sharrock	14:00 Tue1:5 Mod. Lang. 7-2/MI First Floor 17 Miss L R Stevenson
Wednesday 02/10/2019						
08:40 Wed1:1 En 7-2/En First Floor 16 Mrs S Hammond	08:45 AM Mark7	08:55 Wed1:2 Comb Sci 7-1/Sc Second Floor 11 Mrs S Bukhari	10:40 Wed1:3 Geography 7-2/Gg Second Floor 24 Miss A Sharrock	12:00 Wed1:4 Music 7-Gold/Mu Second Floor 12 Mr T A Smith	13:00 Wed1:CHP Tutor Mark7 Second Floor 24 Mrs J O'Hara Douglas	14:00 Wed1:5 Maths 7-1/Ma First Floor 04 Mr A Seymour-Hollis
Thursday 03/10/2019						
08:40 Thu1:1 En 7-2/En First Floor 16 Mrs S Hammond	08:45 AM Mark7	08:55 Thu1:2 Comb Sci 7-1/Sc Second Floor 11 Mrs S Bukhari	10:40 Thu1:3 Computer Science 7-Prpl/Cp Second Floor 36 Mr Z Aslam	12:00 Thu1:4 Des & Tech 7-Prpl/Dtc Ground Floor 31 Miss L-A S Harrison	13:00 Thu1:CHP Tutor Mark7 Second Floor 24 Miss A Sharrock	14:00 Thu1:5 Maths 7-1/Ma First Floor 04 Mr A Seymour-Hollis

Assignments


6
Assignments

To view your assignments / homework click on 'Assignments'. This will show you the homework that has been set for you from your class teachers.

Click on the 'More...' button for more information about the set homework. Your teacher can also attach documents for you to download.

Subject	Status	Precis	Issued	Due	Expected	Class
Computer Science	Submission in class	E-Safety Section B and C	01/10/2019	15/10/2019	30m	7-Prpl/Cp
Revise section B and C from the knowledge organiser. You will have a short test at the start of the lesson.						